

Kjeltech protein estimation system

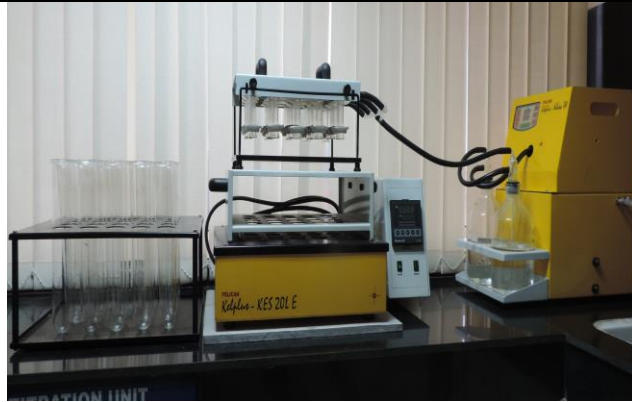
Description

Make: Pelican

Model: KES-20L

Specification: Estimation of Nitrogen and protein in % basis

Kjeldahl protein estimation system by Kelplus-KES20LE is a fully automated instrument with complete setup of digestion distillation and titration for the determination of organic nitrogen is the worldwide standard for the purpose of calculating the nitrogen and protein content in both human food and animal feed.



Working principle

The Kjeldahl method is the standard method of nitrogen determination dating back to its development in the late 1800's. The method consists of three basic steps: 1) digestion of the sample in sulfuric acid with a catalyst, which results in conversion of nitrogen to ammonia; 2) distillation of the ammonia into a trapping solution; and 3) quantification of the ammonia by titration with a standard solution.

Applications

1. Food Business Units
2. Food Processing Industries
3. Animal Feed Industries
4. Hotels and Food Restaurants
5. Agro Processing Units
6. Small scale Enterprise
7. Soil Nitrogen samples

User instructions

1. Sample must be drawn from a homogenous mixture
2. Sample weight should range between 0.2-5g only.
3. Conversion Factor for protein calculations is to be taken from prescribed standards on the basis of the sample taken for analysis
4. Suitable for solid and semisolid samples only(fat free)

Contact us

Dr. Mridula Devi
 Incharge FTL
 Food Testing Laboratory, ICAR-CIPHET Ludhiana
ftlciphet@gmail.com, 0161-2313181

Charges

	Cost , Rs.	GST, Rs.	Total cost, Rs.
Farmers	525 per sample	95/-	620/-
Students	525 per sample	95/-	620/-
Other national laboratories/	700 per sample	126/-	826/-

R&D organizations			
Industries	1500 per sample	270/-	1770/-